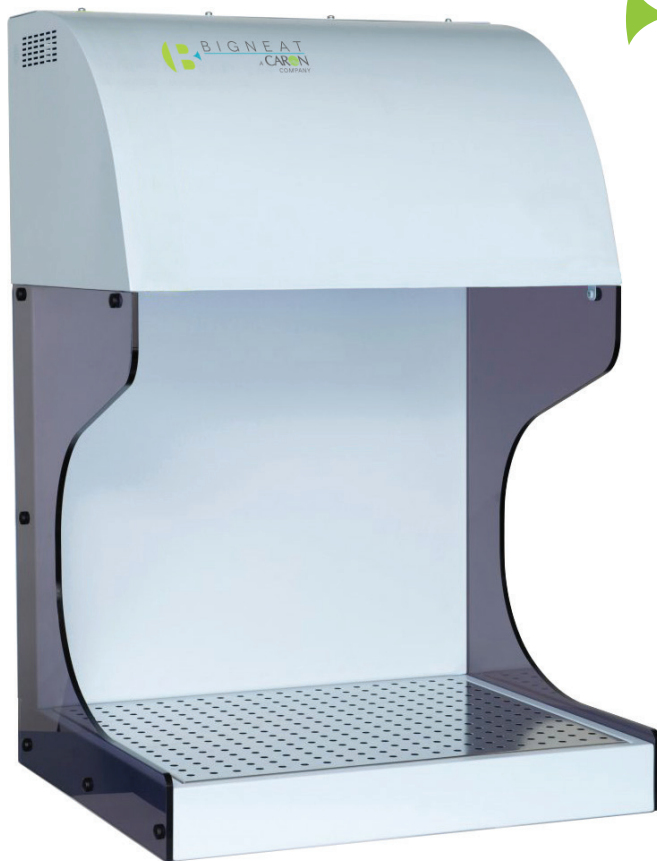


## UPRIGHT AND TABLE DOWNFLOW SYSTEMS

# Sample Prep Cabinets

protecting the operator from airborne hazards



### DESCRIPTION OF OPERATION

Downflow air takes dirty/contaminated air away from the operator and down through the perforations in the stainless steel work surface.

Visual and audible alarm will sound if airflow falls to an unacceptable level.

Work surface is removable for easy cleaning and access to the pre-filter, which protects the HEPA filter from larger particles and blockage from spills.

Filter clamping mechanism allows easy loading of the filter and ensures an even seal at the filter face at all times.

Speed of the centrifugal fan is controlled to achieve an optimum air flow of 0.5m/s (98 fpm) at the work surface.

**Caron's sample prep unit is a bench mounted ductless fume cabinet with a small footprint. It provides protection for the operator from chemical vapours, fumes or particles.**

Unit provides unrestricted access for procedures and handlings that are difficult to perform within a standard fume cabinet.

This compact portable system can be located where it is conveniently needed and installed on an existing work surface without the need for ducting.

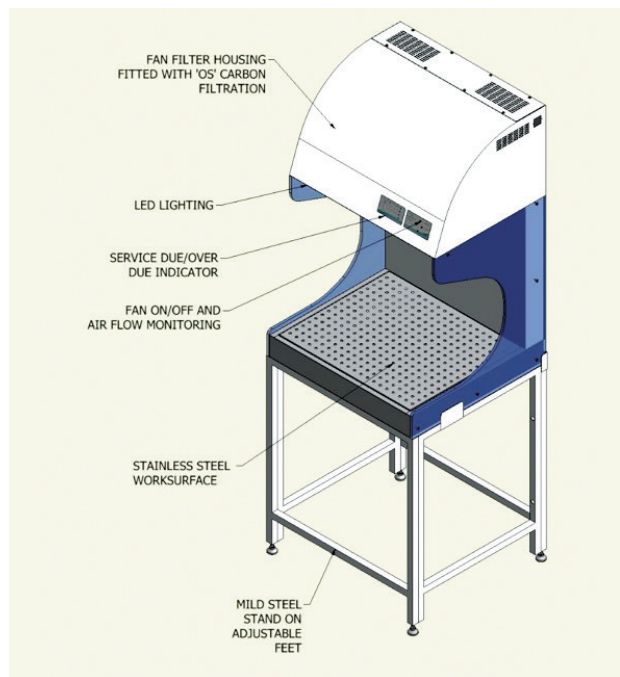
Uses Chemcap™ carbon filter (for chemical fumes and vapours) or HEPA filtration (for particulates).

### BENEFITS

- No ducting required
- Quiet operation
- Keypad control panel with touch button controls
- Audible electronic low air flow alarm
- Service due indicator
- Low energy LED lighting
- Simple to maintain



Flow demonstrated with a Flow Check instrument.



### FILTRATION USED IN DOWNFLOW CABINETS

**Pre-filtration** eliminates particles at 5.0 micron or larger to an efficiency of 92% as defined in BS EN ISO 779.

**Carbon Filtration** eliminates toxic compounds within the recommended occupational exposure limit for pollutant gases having molecular weight equal to or greater than 30. Efficiency 99.9%.

**HEPA filtration** (H14 Standard) eliminates particles 0.3µm or larger to an efficiency of 99.995%.

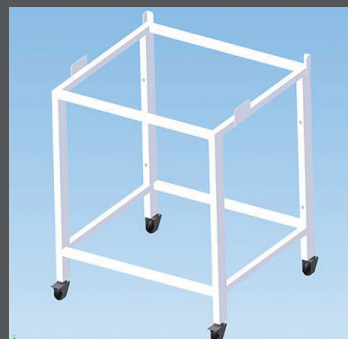
### DESCRIPTION AND TECHNICAL INFORMATION

Model	Description	External Dims (WxDxH)	Internal Dims (WxDxH)
655mm	Optiflow Safety Workstation supplied complete with pre-filter, carbon filter (F3 size, of pre-determined optimization) or HEPA filter (H3 size)	655 x 600 x 1000mm (25.7" x 23.6" x 39.4")	634 x 520 x 565mm (24.9" x 20.4" x 22.2")

Power supply: 230VAC, 50Hz, 3Amp, 1Ø or 110VAC, 60Hz, 3Amp, 1Ø.

### OPTIONAL STAND

Your cabinet can be provided with an open box-section support stand/bench with levelling/ adjustable feet or casters (lockable).



### FREE ASSESSMENT SERVICE

Please contact us for a free assessment and our chemist will undertake a risk analysis and suggest the best filter for your purposes. Activate the QR code at the back of this brochure to download a chemical assessment form.

### OUR PROMISE:

Caron is committed to your safety and will advise on the suitability of a recirculatory filtration system for your applications. We will make suggestions as to good working practices and how best to maintain your team's safety and well being.

## ▶ DOWNFLOW TABLES



### DOWNFLOW TABLES IMPROVE AIR QUALITY IN THE WORKPLACE BY:

- Reducing the risk of operator exposure to harmful substances
- Capturing smoke, chemical vapours, and particles
- Increasing employee and operator safety and well being

### FEATURES:

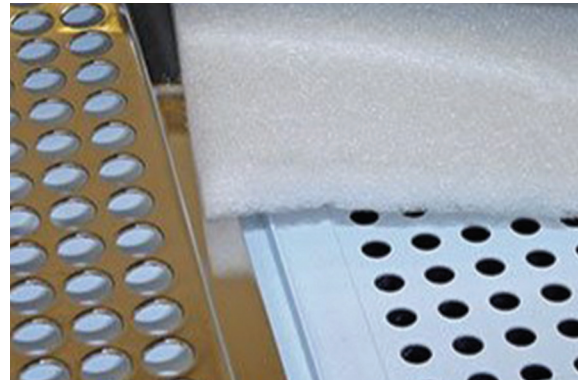
- Unimpeded access for operator
- Flat stable work surface
- Low initial capital outlay, no ducting required
- High capacity filtration
- Operates at a comfortable noise level

## ▶ APPLICATIONS

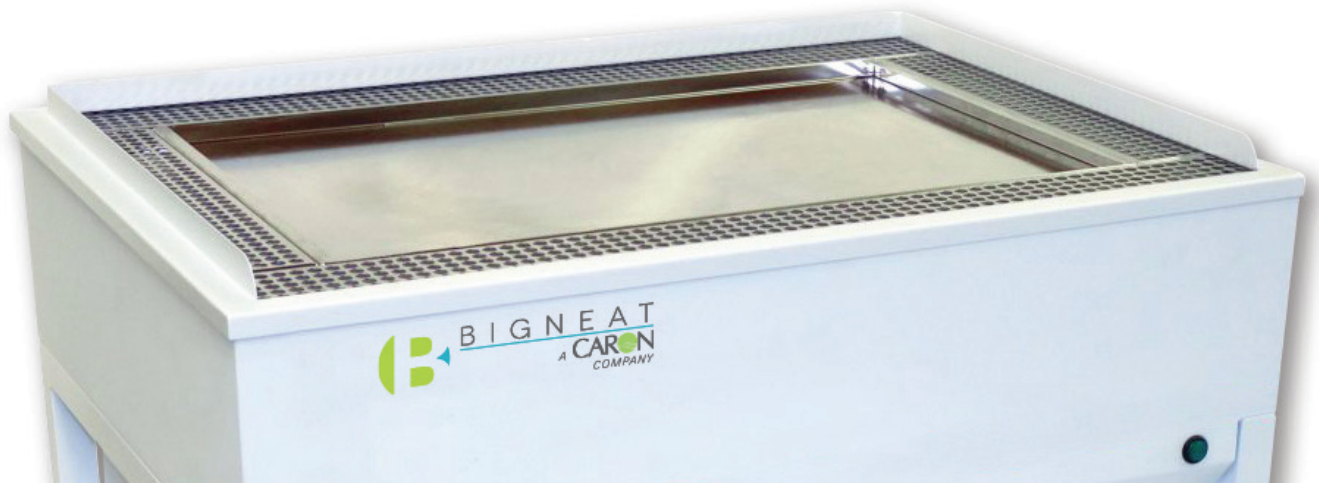
Removal of fumes and vapours from solvents, etc.

▶ Caron downflow tables draw dust, smoke and fumes down past the worktop and away from the operator. The contaminants are filtered and retained by a highly efficient Chemcap carbon filter (removes chemical vapours and fumes) or a HEPA filter (removes particulates).

The Caron design for this downflow bench provides a robust stainless steel work area surrounded by an extraction grille. This gives the user a firm flat surface on which to safely work.



Picture shows quality of airflow grilles, work surface and pre-filter pad.



## DESCRIPTION AND FURTHER INFORMATION

Caron downflow tables take dust and fumes away from your workspace by drawing them down through grilles into the internal filters, returning clean air back to the room.

Downflow tables are designed to provide excellent operator protection and have adjustable fan-speed control providing optimum grille velocities; 59 to 98 fpm.

Tables are constructed from epoxy powder coated mild steel with 304 grade stainless steel grilles and worktop. The ventilation grilles and worktop are fully removable to allow access to filters beneath for easy cleaning and filter change.

Utilising Chemcap carbon filter technology, these downdraft tables can be used for an ever increasing range of applications.

These benches help you to meet Health & Safety regulations and to comply fully with COSHH regulations.



## FILTRATION STANDARDS & PERFORMANCE

**Chemcap™** carbon filters provide a filtration efficiency of 99.9% for the duration of the filter life.

**Pre-filter pad** eliminates particles at 5.0 microns or larger to an efficiency of 92% as defined in BS EN ISO 779.

**HEPA filtration** (H14 Standard) eliminates particles 0.3 microns or larger to an efficiency of > 99.995 %.

Model	Description	Dimensions WxDxH
1000mm	Downflow Table supplied complete with prefilter, carbon filter (of predetermined type), or HEPA filter optional.	1000 x 708 x 1021mm (39.4" x 27.8" x 40.2")

*Available for power supply: 110V, AC, 60Hz, 8Amp, 1Ø or 230V, AC, 50Hz, 5Amp, 1Ø.*

## CARON - A WORLD CLASS MANUFACTURER OF CLEAN AIR SYSTEMS AND SAFETY CABINETS

Caron is a leading global provider of clean air safety systems and cabinets to scientific laboratories and workshops in disciplines such as pharmaceuticals, chemicals, materials science, photonics and electronics.



*Chemical Assessment Form*

## QUALITY ASSURED

**CE** Caron 230V systems are CE marked

Caron manufactures from UL listed components

CARON PRODUCTS & SERVICES, INC.  
PO Box 715 / Marietta OH 45750 / PHONE 740 373 6809 / 800 648 3042 / FAX 740 374 3760

United Kingdom Office:  
4/5 Piper's Wood Industrial Park • Waterberry Drive • Waterlooville • Hampshire. PO7 7XU. UK.  
Phone: +44 (0)23 9226 6400 • Fax: +44 (0)23 9226 3373

**CARON**